



2025-26 MYEFO Snapshot

Table of Contents

Budget balances and flows

Budget balances	Revenue over time	Types of revenue
Expenses over time	Expenses by function	Contingency Reserve
Decisions taken but not yet announced		

Changes since the last fiscal update

Change in UCB	Revisions to revenue	Revisions to expenses	Government decisions
---------------	----------------------	-----------------------	----------------------

Economic outlook and other budget aggregates

Economic parameters	Other aggregates	Historical UCB impacts
---------------------	------------------	------------------------

Budget balances and flows

Parliamentary
Budget Office

Budget balances

Revenue over time

Types of revenue

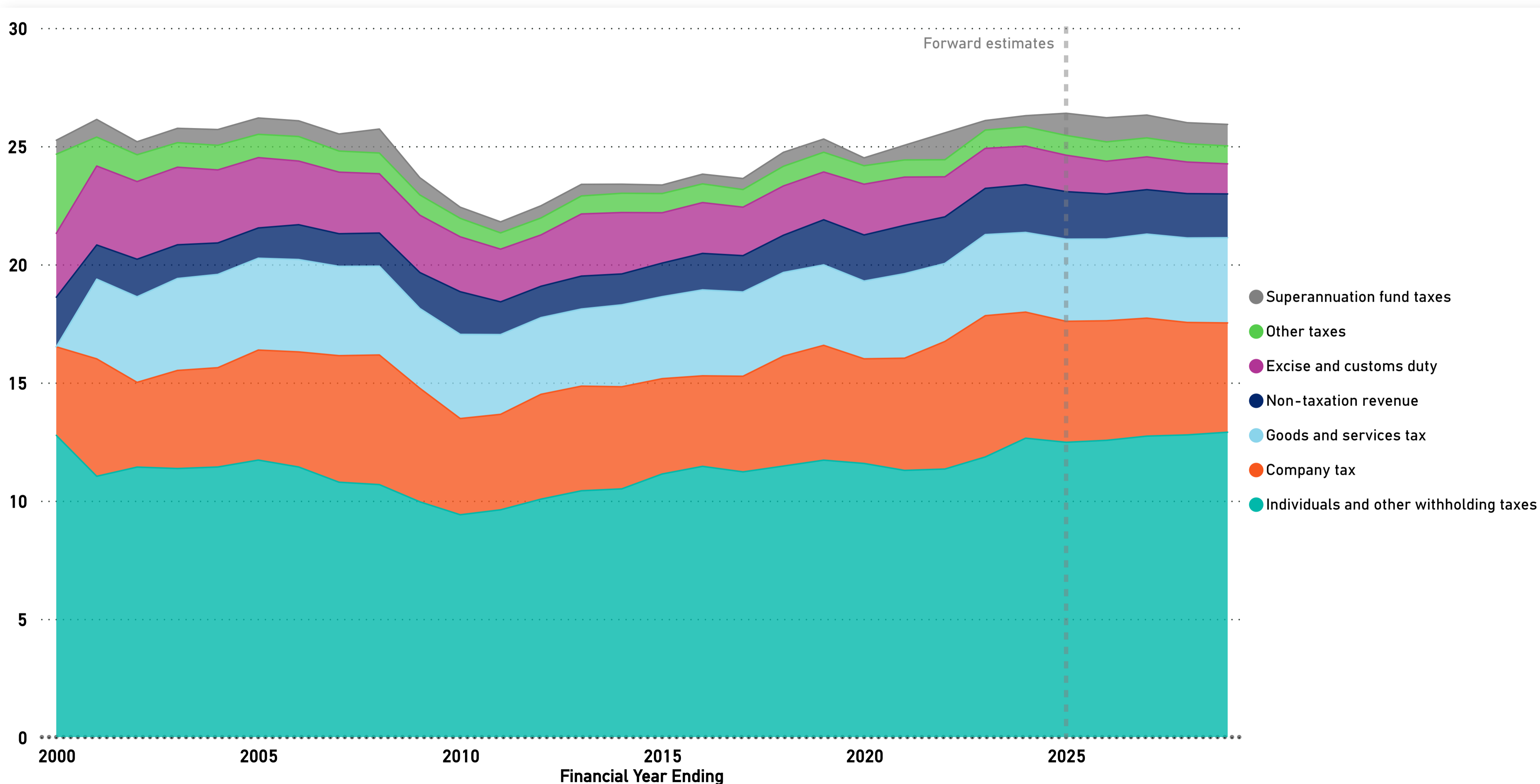
Expenses over time

Expenses by function

Contingency Reserve

Decisions taken but not yet announced

% of GDP



Units

- ☐ \$billion
- ☒ % of GDP
- ☐ % of total revenue

Budget rounds

- ☒ 2025-26 MYEFO
- ☐ 2025-26 Budget
- ☐ 2024-25 MYEFO

Revenue type

All

Year

2000

2029

Note: 'Other taxes' includes fringe benefits tax, petroleum resource rent tax, wine equalisation tax, luxury car tax, major bank levy, agricultural levies, visa application charges and other taxes.



Glossary



Budget balances

Revenue over time

Types of revenue

Expenses over time

Expenses by function

Contingency Reserve

Decisions taken but not yet announced

% of GDP



○ \$billion

● % of GDP

○ % of total revenue

Budget rounds

2025-26 MYEFO

☐ 2025-26 Budget

☐ 2024-25 MYEFO

Financial year

☐ Select all

2024-25

2025-26

2026-27

2027-28

2028-29

Revenue type

All

See sub revenue

Note: 'Other taxes' includes fringe benefits tax, petroleum resource rent tax, wine equalisation tax, luxury car tax, major bank levy, agricultural levies, visa application charges and other taxes.





Budget balances

Revenue over time

Types of revenue

Expenses over time

Expenses by function

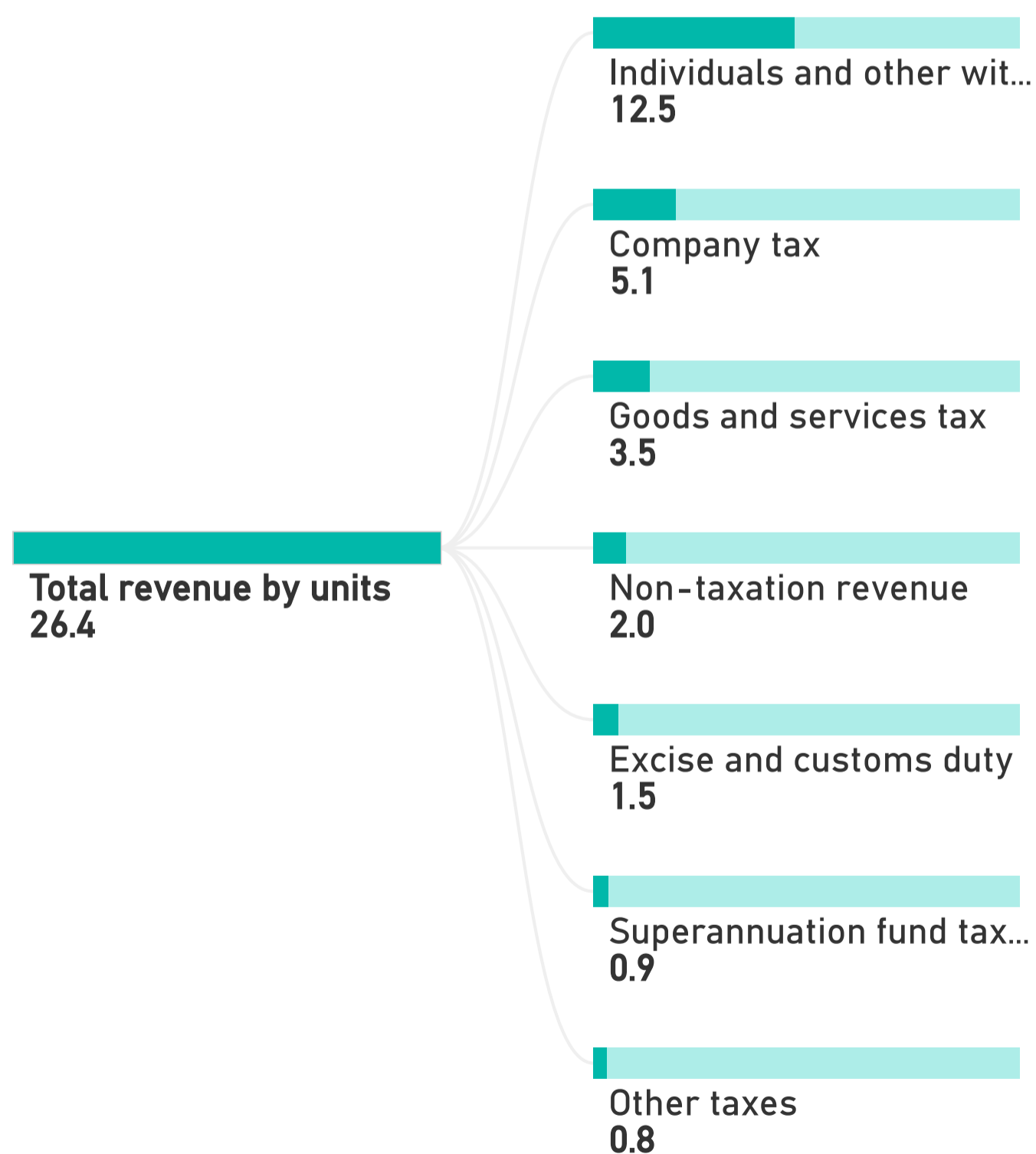
Contingency Reserve

Decisions taken but not yet announced

Units

% of GDP

Revenue type



Units

○ \$billion

● % of GDP

○ % of total revenue

Budget rounds

2025-26 MYEFO

☐ 2025-26 Budget

○ 2024-25 MYEFO

Financial year

2024-25

○ 2025-26

○ 2026-27

○ 2027-28

○ 2028-29

Revenue type

All



Glossary

Parliamentary
Budget Office

Budget balances

Revenue over time

Types of revenue

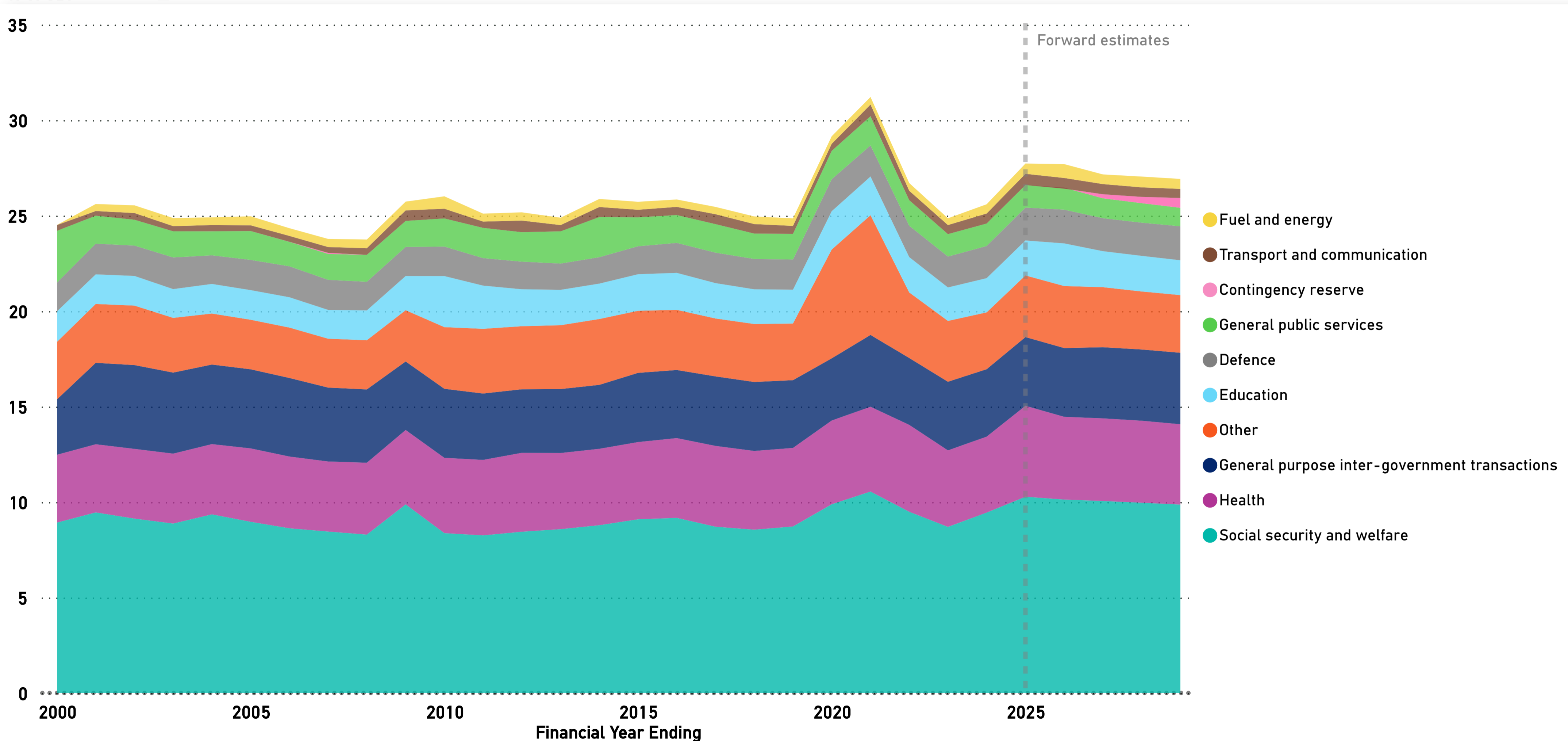
Expenses over time

Expenses by function

Contingency Reserve

Decisions taken but not yet announced

% of GDP



Units

○ \$billion

● % of GDP

○ % of total expenses

Budget rounds

2025-26 MYEFO

☐ 2025-26 Budget

○ 2024-25 MYEFO

Expenses type

All

Year

2000

2029

Note: 'Other' includes other purposes, housing and community amenities, public order and safety, and various other expense items.

'General purpose inter-government transactions' include GST revenue provision to the state from 2000-01 to 2005-06 financial year.

The Contingency Reserve is an allowance within the government's budget estimate forecasts, and is usually moved from the reserve to the relevant area after that budget year has passed.



Glossary



Budget balances

Revenue over time

Types of revenue

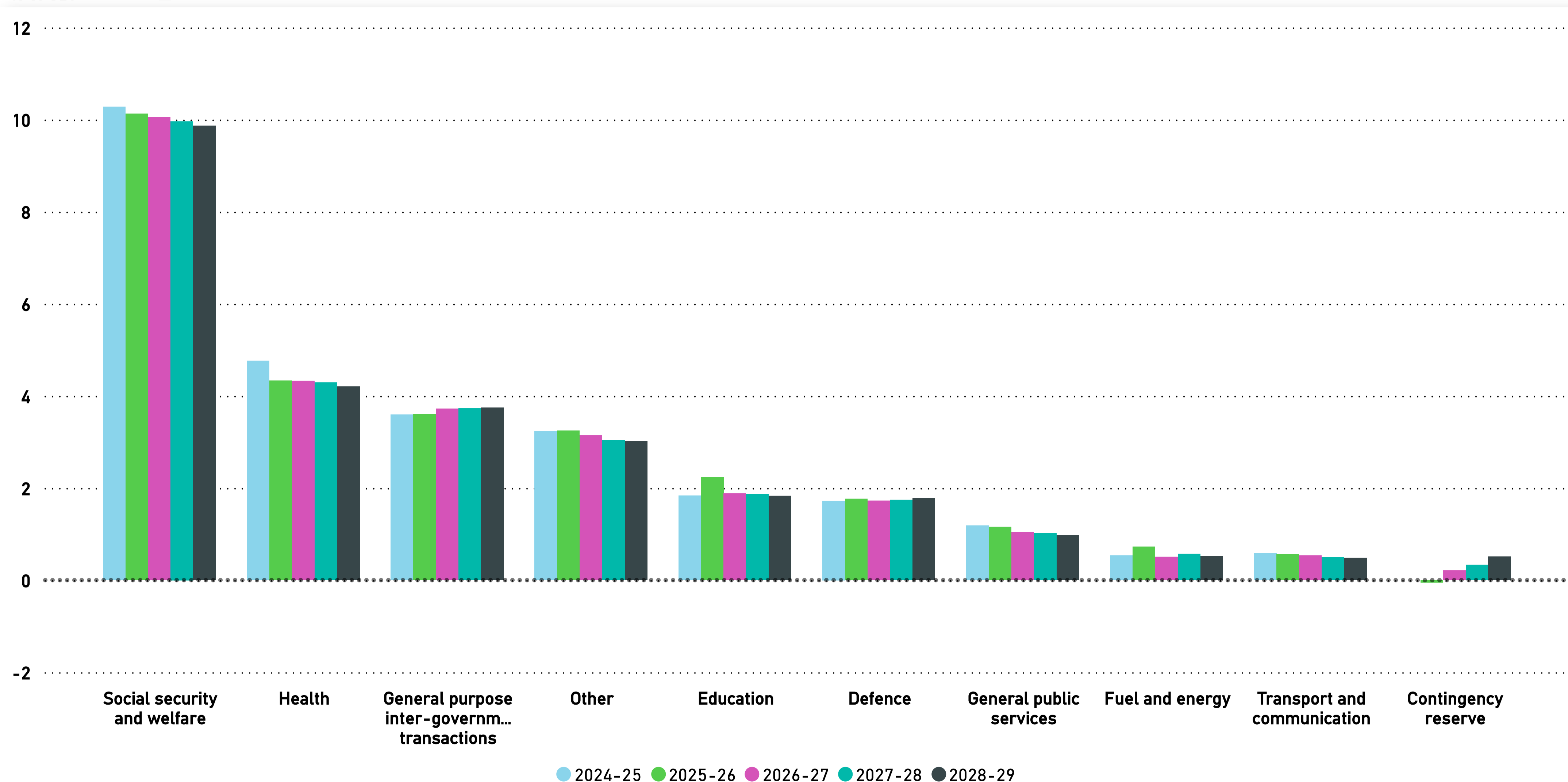
Expenses over time

Expenses by function

Contingency Reserve

Decisions taken but not yet announced

% of GDP



Units

○ \$billion

● % of GDP

☐ % of total expenses

Budget rounds

2025-26 MYEFO

☐ 2025-26 Budget

2024-25 MYEFO

Financial Year

☐ Select all

2024-25

2025-26

2026-27

2027-28

2028-29

Expenses type

All

See sub expenses

Note: 'Other' includes other purposes, housing and community amenities, public order and safety, and various other expense items.



- Budget balances
- Revenue over time
- Types of revenue
- Expenses over time
- Expenses by function
- Contingency Reserve
- Decisions taken but not yet announced

Units

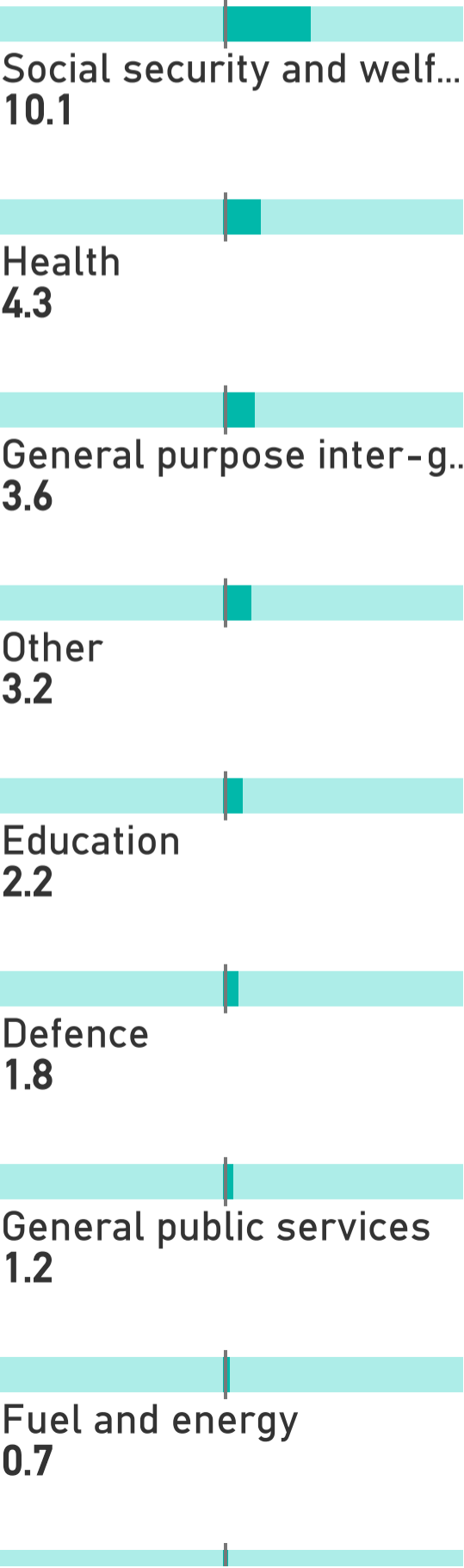
% of GDP

Expenses

Sub expenses



Total expenses by units
27.7



Units

- ☐ \$billion
- ☒ % of GDP
- ☐ % of total expenses

Budget rounds

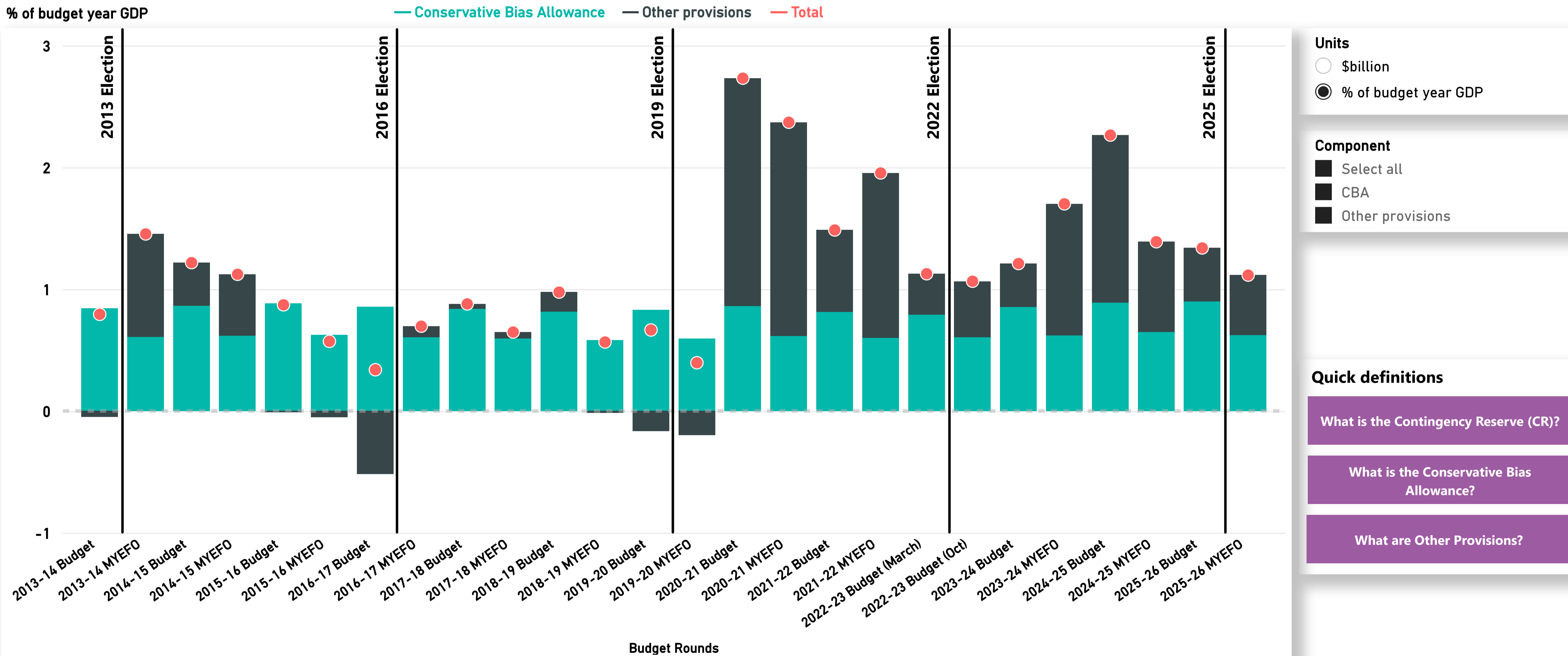
- ☒ 2025-26 MYEFO
- ☐ 2025-26 Budget
- ☐ 2024-25 MYEFO

Financial Year

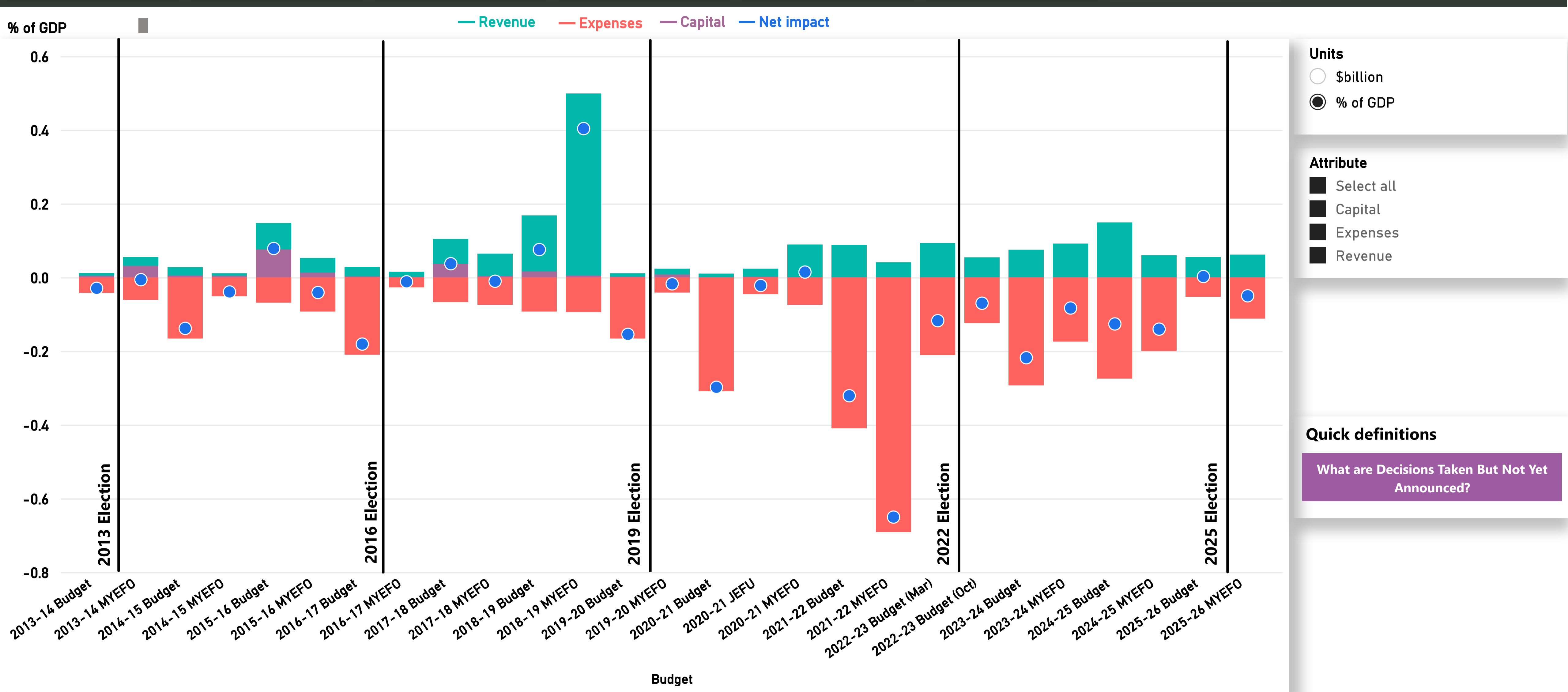
- ☐ 2024-25
- ☒ 2025-26
- ☐ 2026-27
- ☐ 2027-28
- ☐ 2028-29

Expenses type

All



Note: Impact is presented on an expense basis and is aggregated over the forward estimates for each budget. For example, '2020' refers to the total amounts allocated to the Contingency Reserve at the 2019-20 Budget, for the budget year and forward estimates years of 2019-20 to 2022-23. Provisions that would increase expenses or decrease revenue are recorded as positive, while provisions that would decrease expenses or increase revenue are reported as negative. CBA amounts are PBO calculations, which may differ very slightly from those published in budgets.

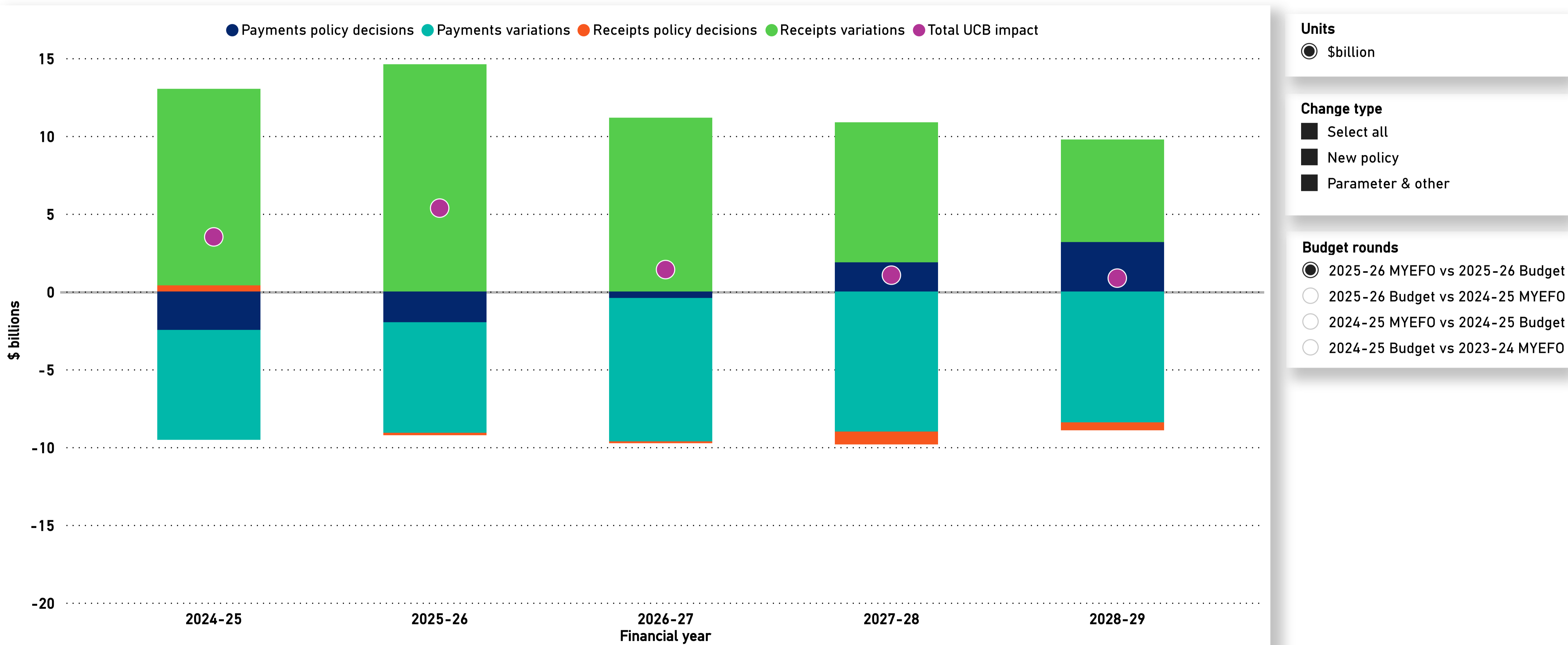


Change in UCB

Revisions to revenue

Revisions to expenses

Government decisions



Note: Parameter and other variations are any changes to the budget balance that are not due to policy decisions. These primarily include revised economic forecasts, revisions to a program's estimated costs, and re-profiling of expenditure.



Change in UCB

Revisions to revenue

Revisions to expenses

Government decisions



● \$billion

Budget rounds

2025-26 MYEFO vs 2025-26 Budget

○ 2025-26 MYEFO vs 2024-25 MYEFO

☐ 2025-26 Budget vs 2024-25 MYEFO

☐ 2025-26 Budget vs 2024-25 Budget

Financial year

☐ Select all

2024-25

2025-26

2026-27

2027 29

2020 20

Revenue type

All

Note: A positive number represents an increase in the fiscal balance and a negative number represents a decrease. Revisions include the total impact from policy decisions and parameter and other variations. 'Other taxes' includes fringe benefits tax, petroleum resource rent tax, wine equalisation tax, luxury car tax, major bank levy, agricultural levies, visa application charges and





Change in UCB

Revisions to revenue

Revisions to expenses

Government decisions



● \$billion

Budget rounds

● 2025-26 MYEFO vs 2025-26 Budget

○ 2025-26 MYEFO vs 2024-25 MYEFO

☐ 2025-26 Budget vs 2024-25 MYEFO

☐ 2025-26 Budget vs 2024-25 Budget

Financial year

☐ Select all

2024-25

2025-26

2026-27

2027-28

2028-29

Expenses type

All

Note: A positive number represents an increase in the fiscal balance and a negative number represents a decrease. Revisions include the total impact from policy decisions and parameter and other variations. 'Other' includes other purposes, housing and community amenities, public order and safety, and various other expense items.



% of GDP

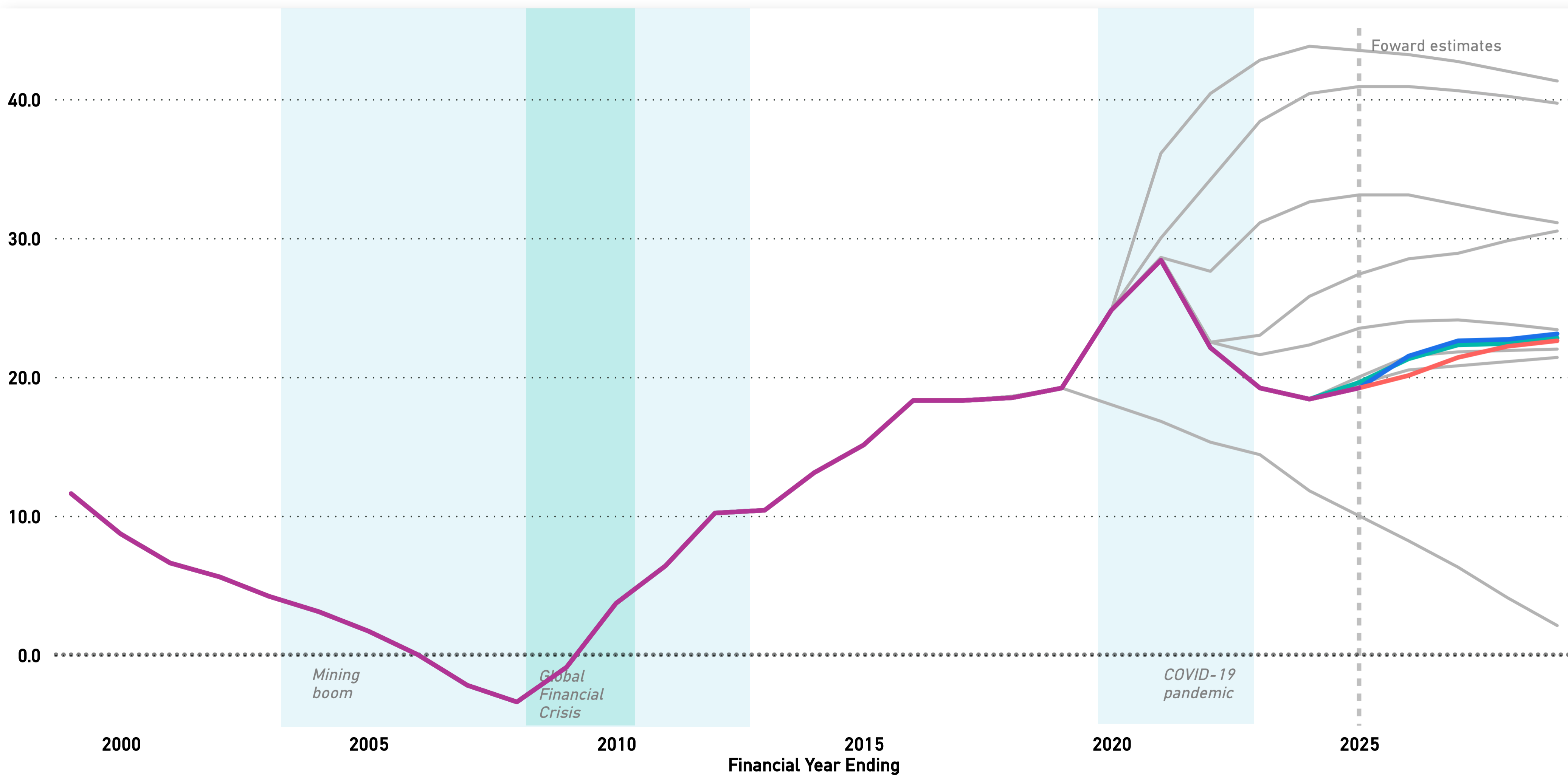
— Historical actuals

— Previous forecasts

— 2024-25 MYEFO

— 2025-26 Budget

— 2025-26 MYEFO



Units

○ \$billion

● % of GDP

Actuals & Forecasts

☐ Select all

Actuals and last 3 Budget updates

Previous forecasts

Other aggregates

☐ Gross debt

☐ Interest payment

☒ Net debt

☐ Net financial worth

○ Payments

☐ Receipts

Change date

See overlay

Note: Historical outcomes may have been revised since first published. Grey lines represent forecasts in previous budgets. Previous forecasts are not available in \$billions.

Chart data begins from 1999-2000.

Shading in 'see overlay' may shift due to changes in the vertical axis.

